



GMT MONTHLY MEMBERSHIP PROGRESS REPORT

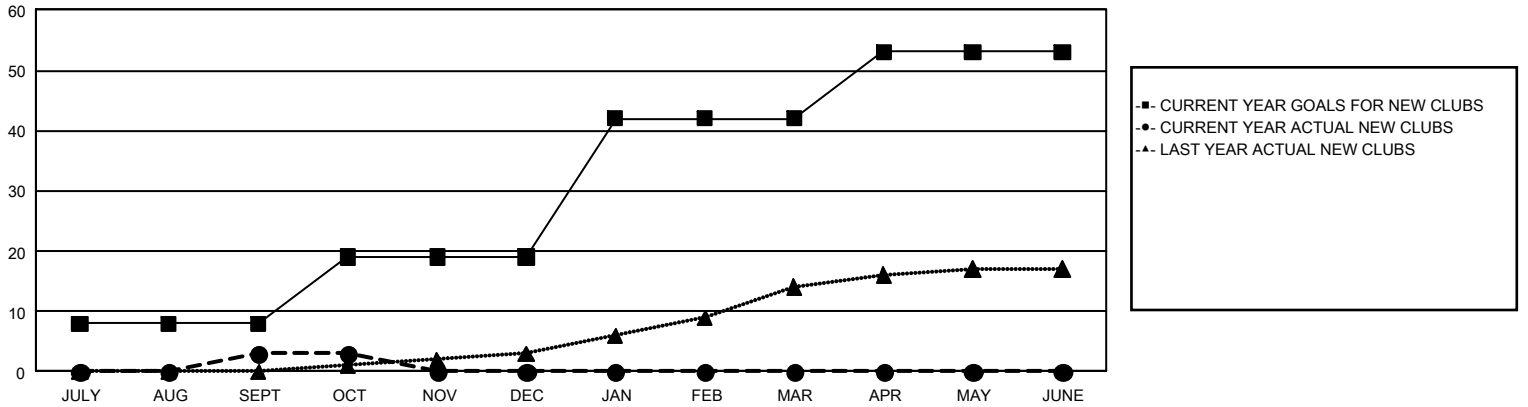
GAT Constitutional Area 5 - Japan

Results as of: 10/31/2023

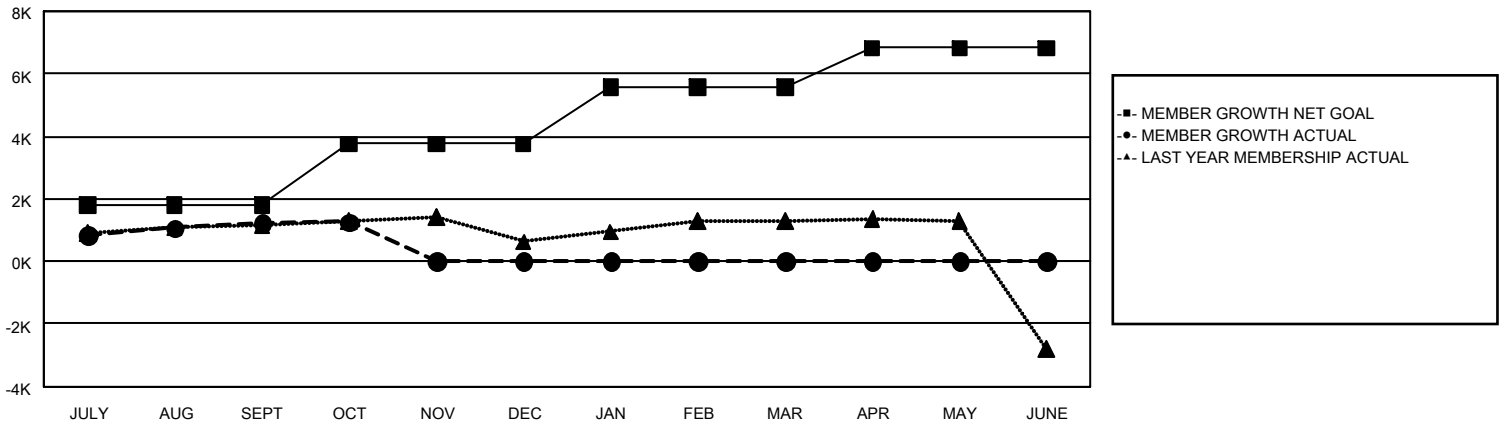
REPORT DOES NOT INCLUDE CLUBS IN UNDISTRICTED AREAS.

Clubs				Members			
RESULTS FOR 2023-2024				RESULTS FOR 2023-2024			
QUARTER	NEW CLUB GOAL	NEW CLUBS	DROPPED CLUBS	QUARTER	MEMBER GROWTH NET GOAL	MEMBER GROWTH ACTUAL	DROPPED MEMBERS ACTUAL (including transfers)
JULY/AUG/SEPT	8	3	3	JULY/AUG/SEPT	1,795	2,926	1,552
OCT/NOV/DEC	11	0	1	OCT/NOV/DEC	1,969	461	398
JAN/FEB/MAR	23	0	0	JAN/FEB/MAR	1,797	0	0
APR/MAY/JUNE	11	0	0	APR/MAY/JUNE	1,261	0	0

GOALS AND ACTUAL NEW CLUBS CUMULATIVE



GOALS AND ACTUAL MEMBERS CUMULATIVE



DROPPED CLUBS: 4	1,381 CLUBS OF 2,760 ADDED 1 OR MORE NEW MEMBERS	<u>GENDER DISTRIBUTION</u>	
<u>DROPPED MEMBERS</u>		MALE	74,823 (76.63%)
DECEASED	234	FEMALE	22,803 (23.36%)
CLUB CANCELLED	0	TOTAL FAMILY UNIT MEMBERS 31,368	
OTHER	1,716		
TOTAL	1,950		
CLICK HERE FOR CUMULATIVE MEMBERSHIP DATA		TOTAL FAMILY UNIT MEMBERS 31,368	
		FAMILY MEMBERS PAYING HALF DUES 17,373	